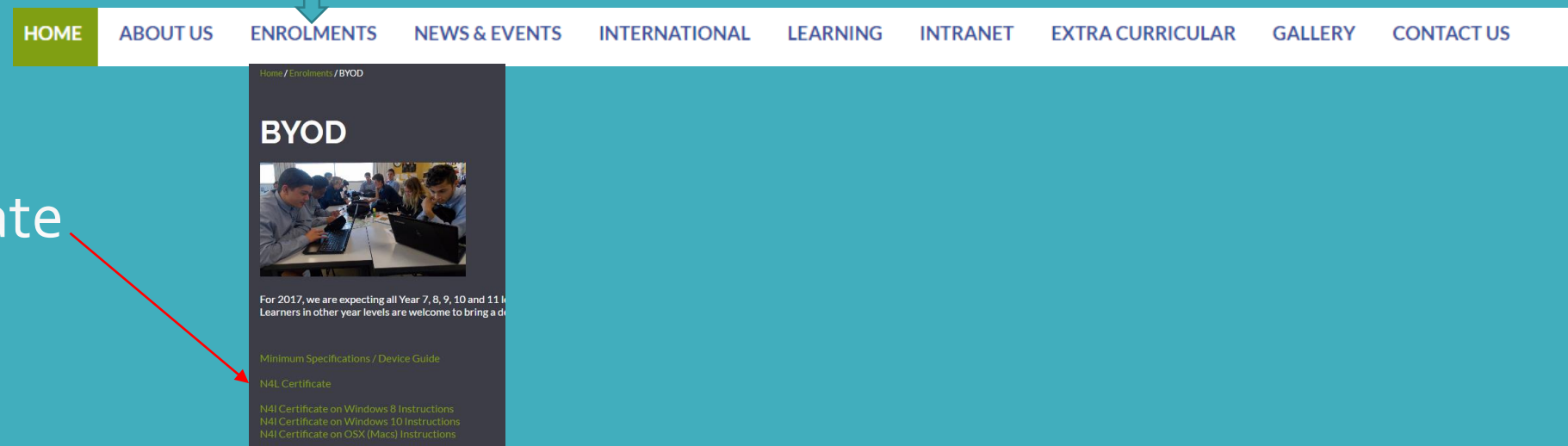


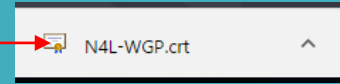
INSTALLING N4L CERTIFICATE (Windows 10 Machines)

- All WiFi devices need to have the N4L Certificate installed prior to them being able to access any websites.
- Connect to the WGPLearner Wifi
- Go to www.wgpcollege.school.nz
- Enrolments
- BYOD tab
- N4L Certificate

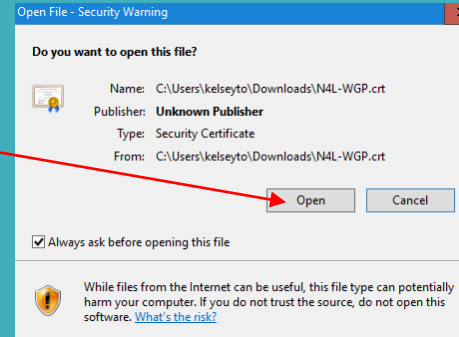


The image shows a screenshot of the WGPLearner website. At the top, there is a navigation menu with the following items: HOME (highlighted in green), ABOUT US, ENROLMENTS (with a blue arrow pointing down to the BYOD page), NEWS & EVENTS, INTERNATIONAL, LEARNING, INTRANET, EXTRA CURRICULAR, GALLERY, and CONTACT US. Below the navigation menu, the main content area is titled "BYOD" and features a photograph of students working on laptops. Below the photo, there is text stating: "For 2017, we are expecting all Year 7, 8, 9, 10 and 11 Learners in other year levels are welcome to bring a device to school." Underneath this text, there are several links: "Minimum Specifications / Device Guide", "N4L Certificate", "N4L Certificate on Windows 8 Instructions", "N4L Certificate on Windows 10 Instructions", and "N4L Certificate on OSX (Macs) Instructions". A red arrow points from the "N4L Certificate" link in the list on the left to the "N4L Certificate" link on the website page.

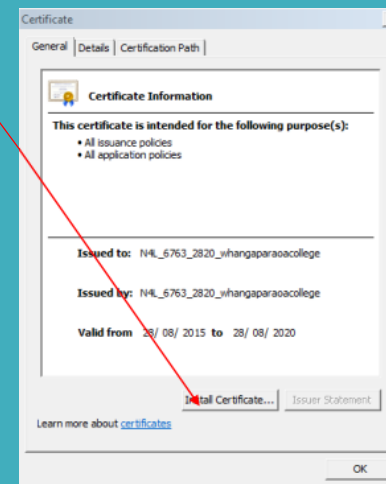
- Certificate will appear on your toolbar at the bottom left of your screen. Click on N4L-WGP.crt



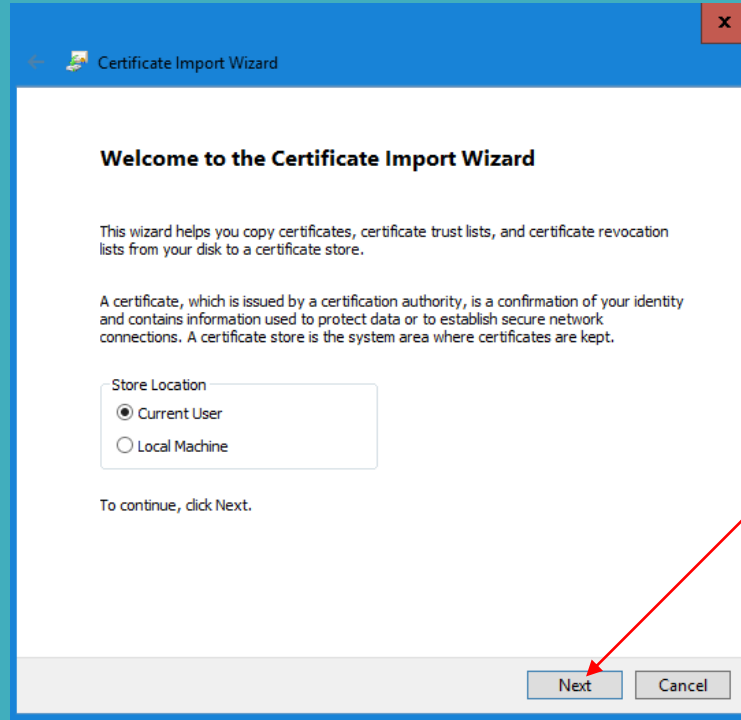
- Click on Open



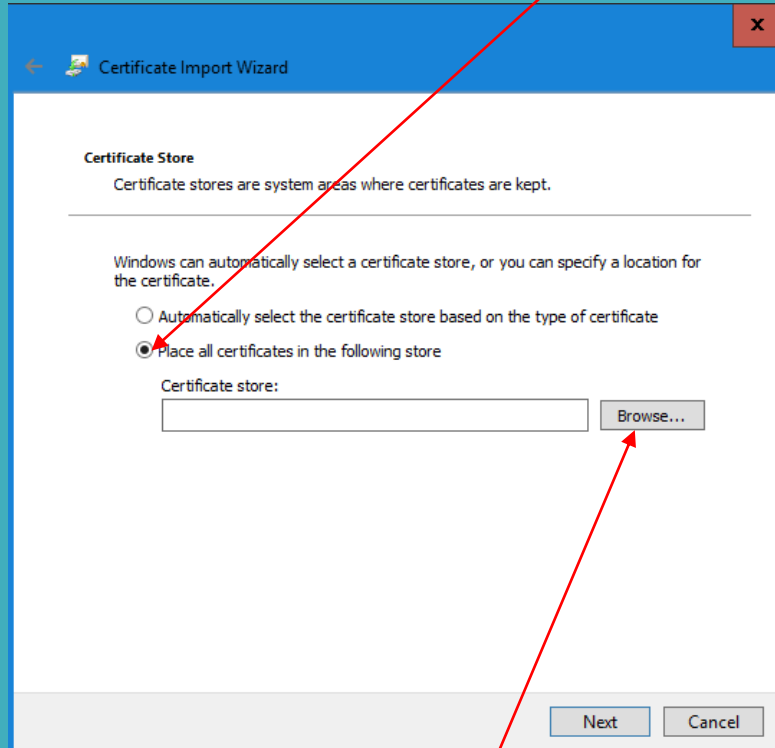
- Click on Install Certificate



- You will see “Welcome to the Certificate Import Wizard” it should default to current user, to continue click “Next”

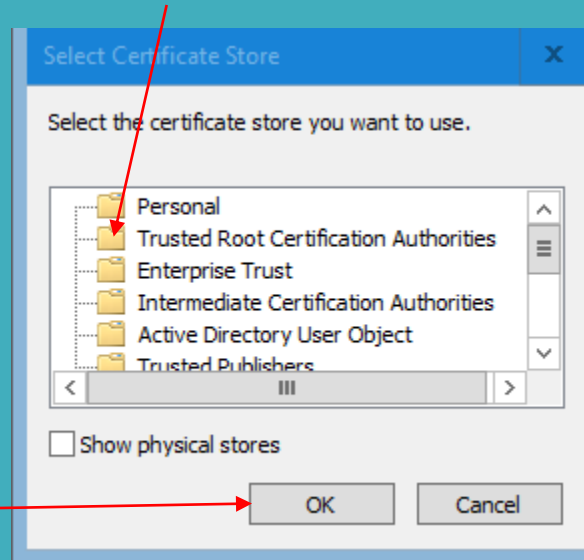


- Click on the option “Place all certificates in the following store”



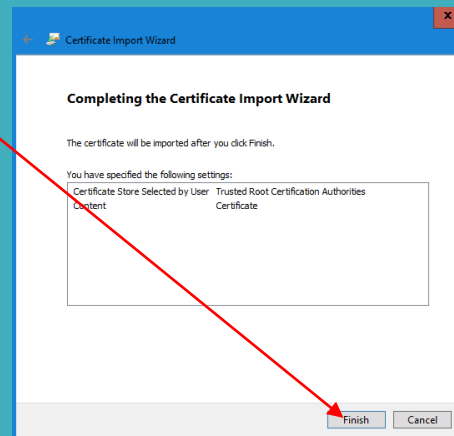
- Then click “Browse”

- Click on the “Trusted Root Certification Authorities” folder

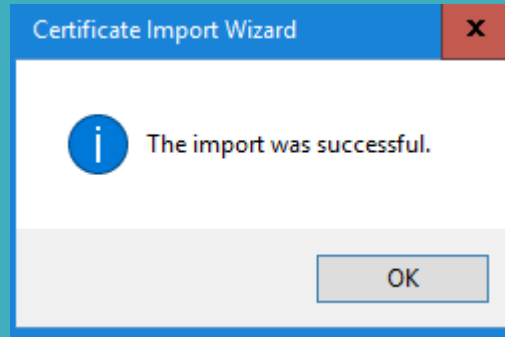


- Click OK

- Click “Finish”



- You should now see the following message:



- Click OK to close the certificate wizard

