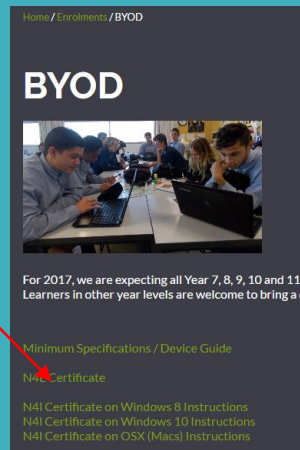
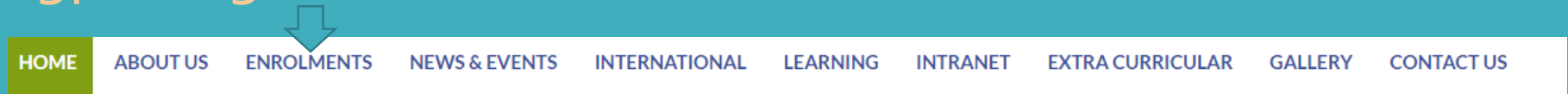


INSTALLING N4L CERTIFICATE OSX (Apple Mac Computers)

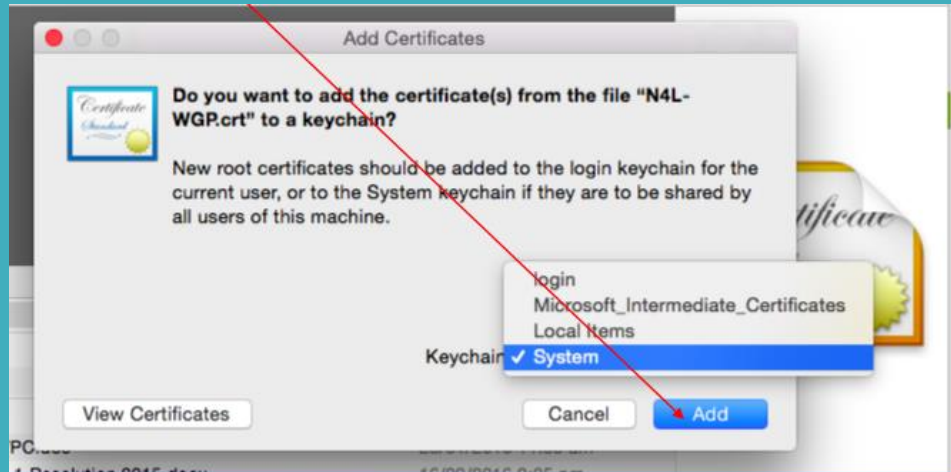
- All WiFi devices need to have the N4L Certificate installed prior to them being able to access any websites.
- Connect to the WGPLearner Wifi
- Go to www.wgpcollege.school.nz
- Enrolments
- BYOD tab
- N4L Certificate
- Click Open



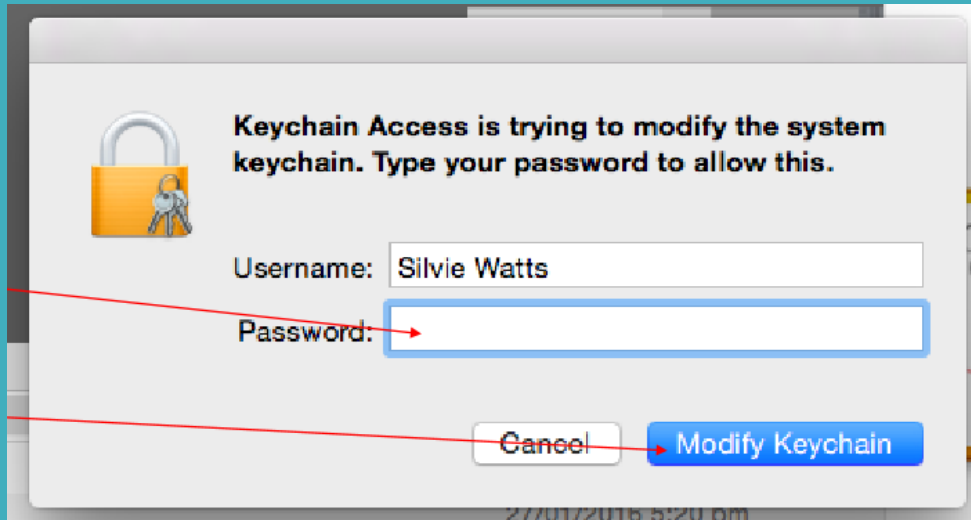
- Look on your bottom toolbar, you will see your certificate icon, double click on this



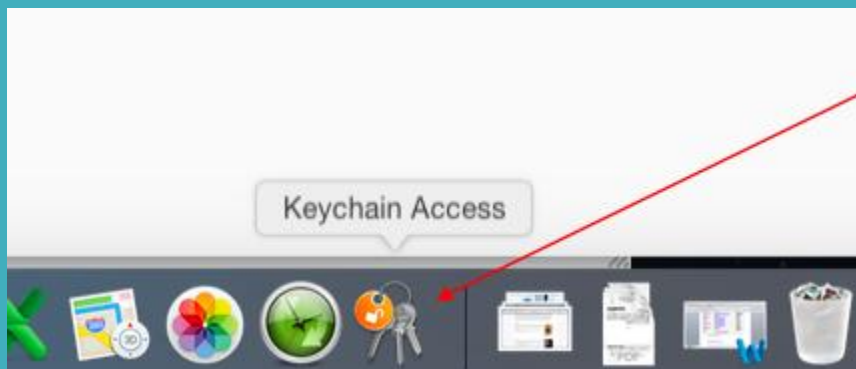
- Click "Add"



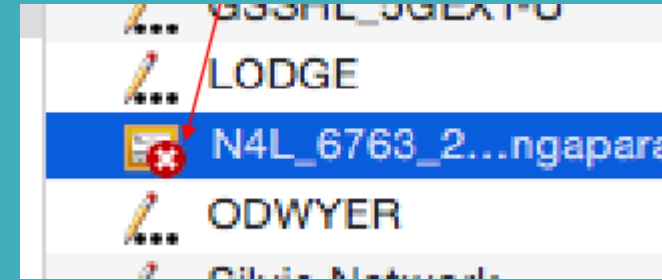
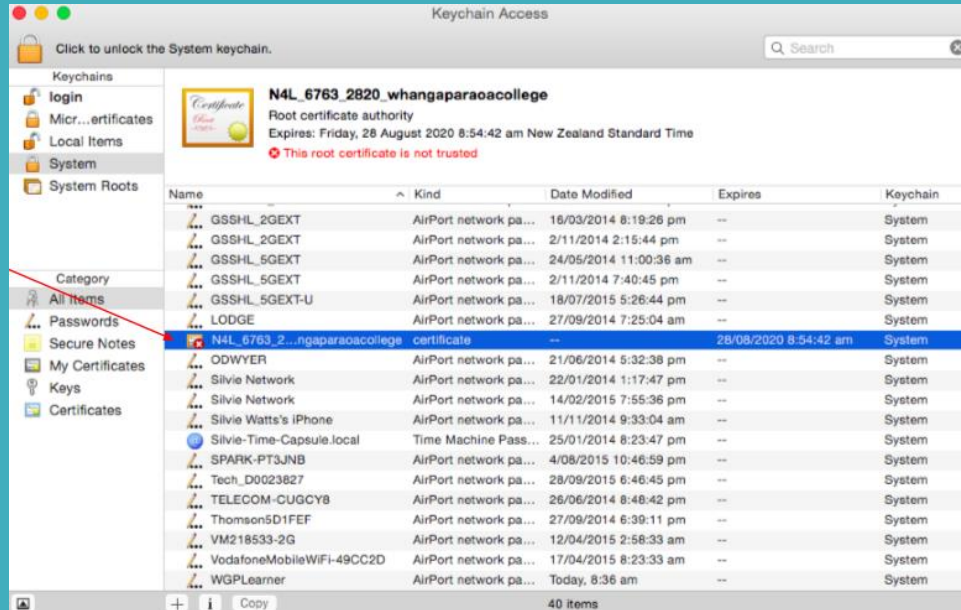
- Type in your laptop password and then click “Modify Keychain”



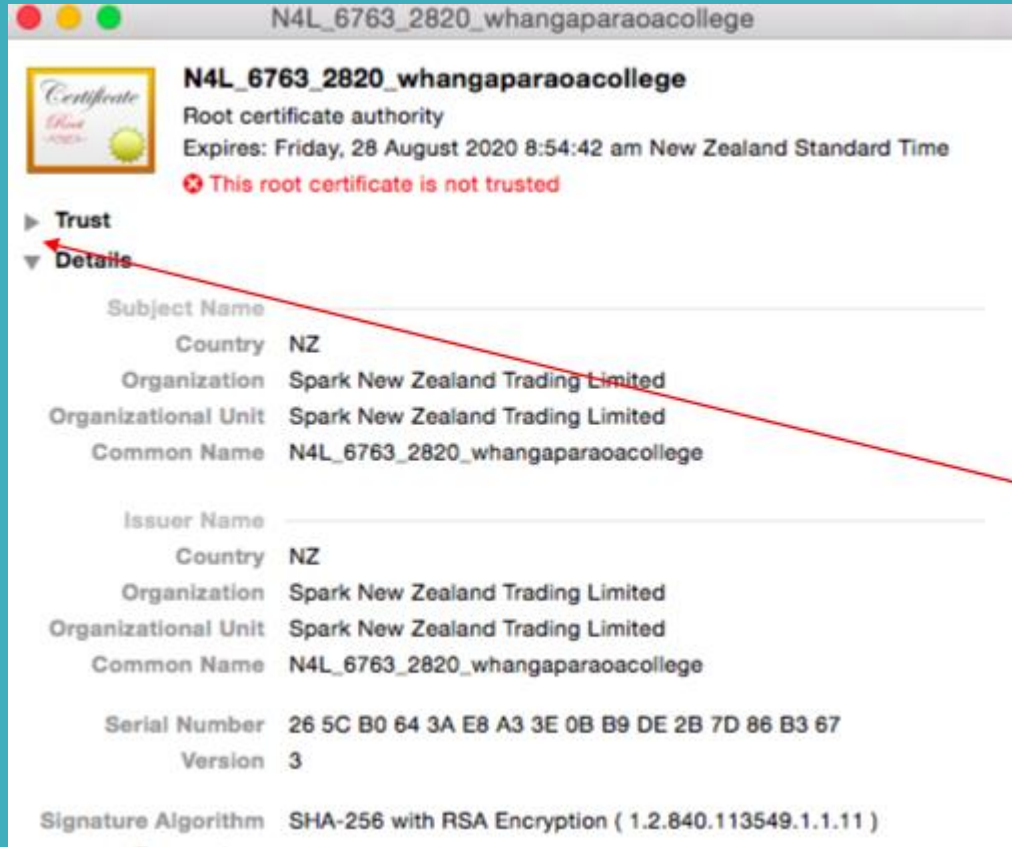
- Double click “Keychain Access” to open



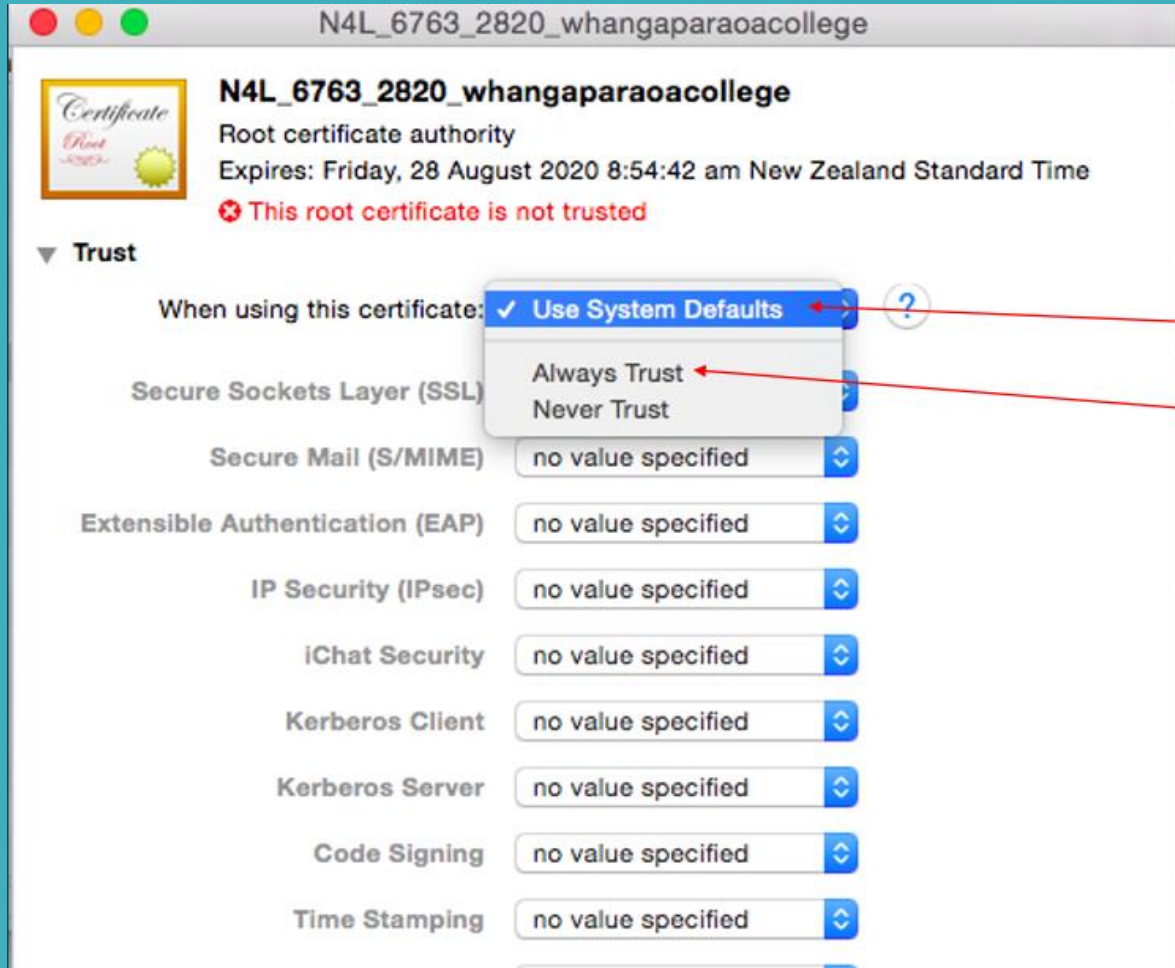
- Find the N4L certificate in the "System Keychain" (top left) and double click to open it. NB: It will have a small red 'x' on the icon



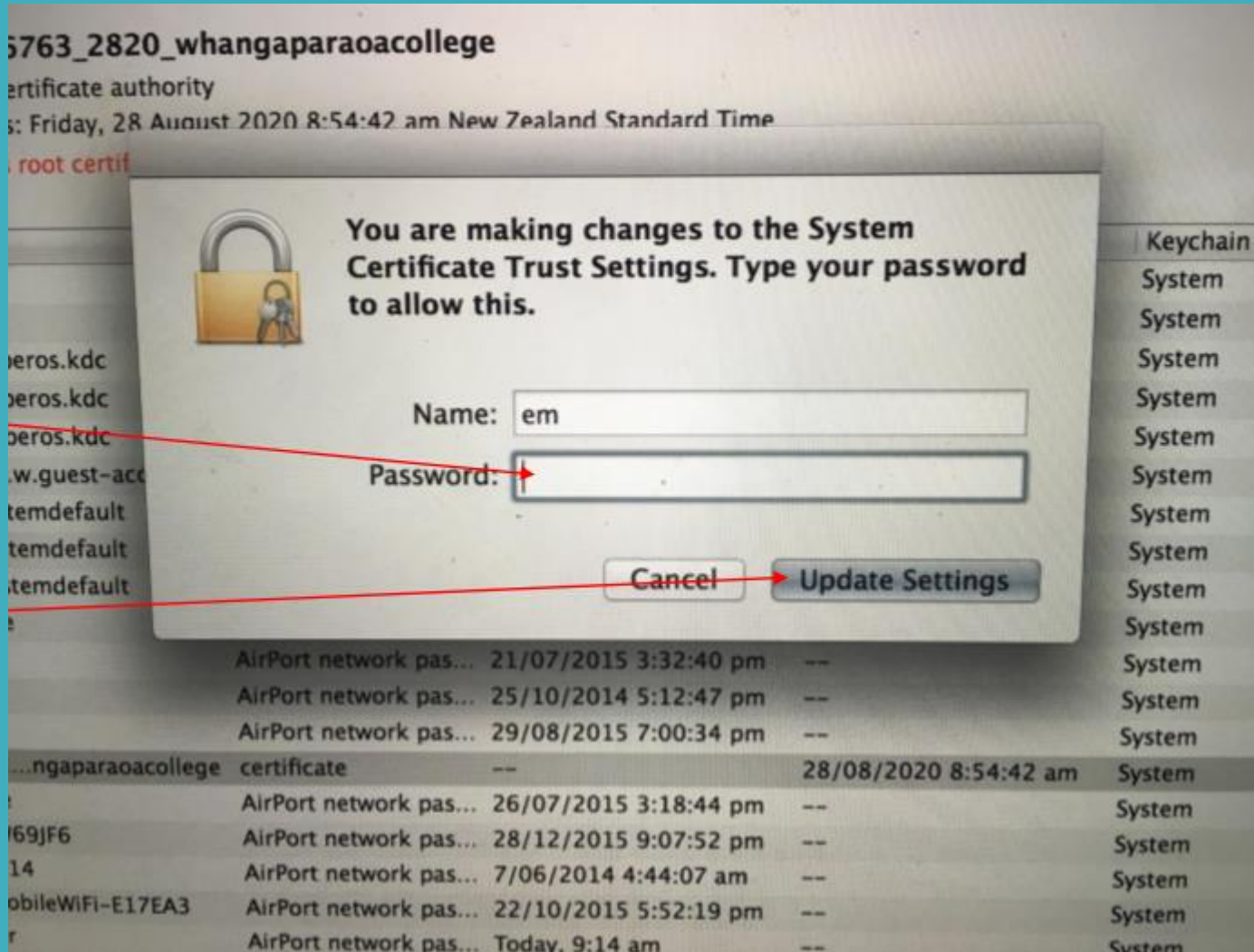
- Click on the small grey triangle beside “Trust” to expand the options



- Under “When using this certificate”, select “Always Trust”



- Type in your LAPTOP password and click “Update Settings”



- In the Keychain access folder, the N4L certificate will now have a small "+" instead of a red "x"

