

# **UNIFORM - JEWELLERY**

**Learners may wear:**

- **one wrist watch and;**
- **one plain stud per ear-lobe.**

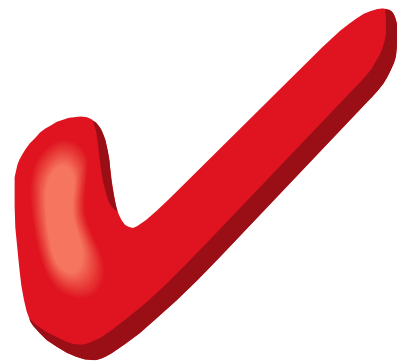
# Ears



# Ears



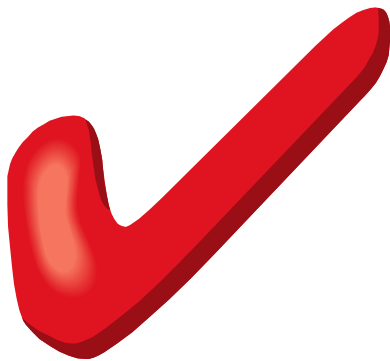
# Nose



# Nose



# Wrist





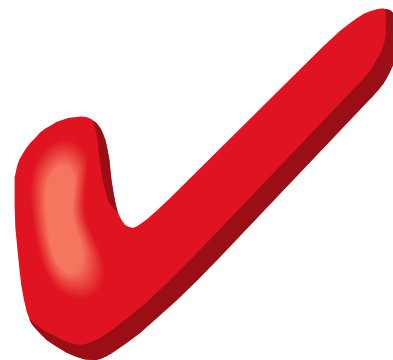
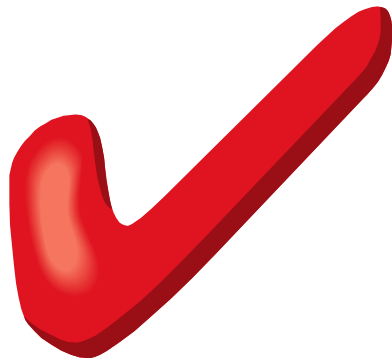
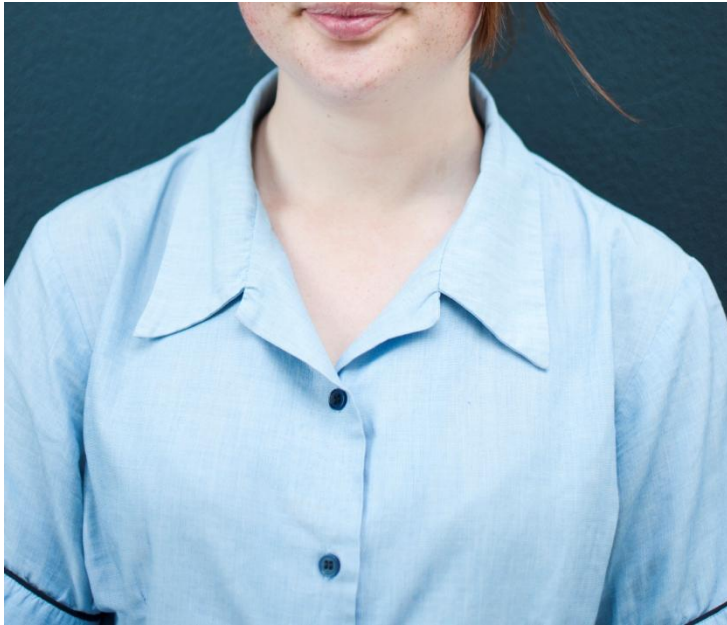
# Wrist



No rings or  
nail polish



# Necklaces

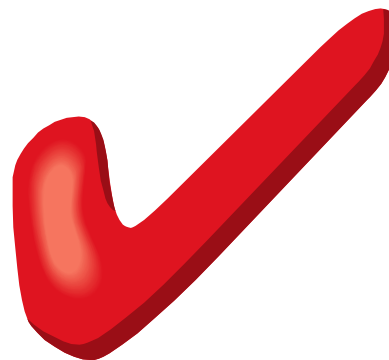




# Necklaces



## Mouth & Tongue



# Mouth & Tongue

